

INVEST IN THE NORTH WEST PROVINCE



**NORTH WEST
DEVELOPMENT
CORPORATION**

WWW.NWDC.CO.ZA

ABOUT NWDC

The North West Province is the ideal place for commercial ventures – and the North West Development Corporation guides the way as a valuable business partner.

The North West Development Corporation (NWDC) is an agency of the Provincial Government of the North West Province. It was established to plan, finance, coordinate, promote and carry out the economic development of the North West Province and its people. The NWDC focuses on the fields of industry, commerce, finance, mining, tourism enterprise related activities and other business resulting in wealth and job creation while taking cognisance of aims and objectives of the Reconstruction and Development Programme of the Republic of South Africa. It is listed as a Schedule 3D provincial government entity in terms of the PFMA of 1994, Act 01 of 1999.

Vision:

To be the cornerstone of promoting trade, attracting investment, and ensuring inclusive economic growth and transformation in the North West Province.

Mission:

To contribute to the inclusive economic growth and transformation of the North West Province through:

- Industrial development;
- Commercial investment;
- Property development and management;
- Development of sustainable enterprises;
- Trade and investment attraction; and
- Programme management.



Values:

- Fairness
- Focus (Batho Pele)
- Integrity
- Diversity
- Accountability
- Professionalism
- Innovation
- Customer-Oriented

The NWDC's strategic thrust is to drive an inclusive strategy towards economic growth and transformation in the Province in line with the Provincial priorities.

The NWDC's purpose is to contribute towards the growth and transformation of the economy by positioning the North West Province as a competitor in the SADC Region, Africa and the globe in investment attraction.

The NWDC aims to demonstrate its leadership by implementing key programmes and providing support for the development of key sectors of the economy in line with the conventional economic and industrial policies of the Province.

Key strategic programme

- SMMEs and corporative development (financial and non- financial support)
- Project management services
- Special Economic Zone (SEZ)
- Property development and management
- Mining
- Agro processing
- Tourism
- Trade and Investment

QUICK FACTS ON THE NORTH WEST PROVINCE

	NORTH WEST
OFFICIAL NAME	North West Province of South Africa
PROVINCIAL PREMIER	Hon. Bushy Maape
CAPITAL CITIES	Mahikeng
POPULATION: Mid 2022	4,12 million(6,9% of South Africa)
AREA km ²	104 882 (8,6% of South Africa)
TOTAL GVA-R (ZAR): Constant 2015 prices (R 1000) 2021	R206 815 510 (5.1% of South Africa)
GVA-R GROWTH: Constant 2015prices 2021 projection	7,7%
GDP-R per Capita Constant Prices 2015 (2021)	R 50 163
INFLATION: Avg 2021	4,6% (STATSSA)
UNEMPLOYMENT RATE 2022	30,1% (STATSSA Q1 2022)
PRINCIPAL LANGUAGES	Setswana, English, Afrikaans
MAJOR CITIES AND TOWNS	Rustenburg, Brits, Mahikeng, Tlokwe, Matlosana and Vryburg
AIRPORTS	Mahikeng and Pilanesberg
RAINFALL	400 – 700 mm per annum
INFRASTRUCTURE	<ul style="list-style-type: none"> • Extensive road, rail and air network • Water • Electricity • Telecommunications • Residential & commercial space • Health care • Higher educational facilities • Convention and exhibition venues

(Source:IHS Markit; Regional eXplorer 2236 (2.6p) July 2022 (2021 Figures)

"fact sheet was correct at time of printing Sept 22"

North West Provincial Districts

Bojanala Platinum District
Dr Kenneth Kaunda District
Dr Ruth Segomotsi Mompati District
Ngaka Modiri Molema District

Local Municipalities

Bojanala Platinum District

Kgetlengrivier Local Municipality
Madibeng Local Municipality
Moretele Local Municipality
Moses Kotane Local Municipality
Rustenburg Local Municipality

Dr Kenneth Kaunda District

City of Matlosana Local Municipality
JB Marks Local Municipality
Maquassi Hills Local Municipality

Dr Ruth Segomotsi Mompati District

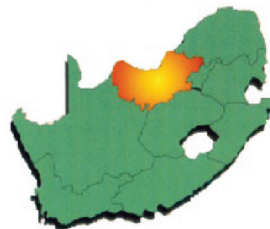
Greater Taung Local Municipality
Kagisano Molopo Local Municipality
Lekwa-Teemane Local Municipality
Mamusa Local Municipality
Naledi Local Municipality

Ngaka Modiri Molema District

Ditsobotla Local Municipality
Mahikeng Local Municipality
Ramotshere Moiloa Local Municipality
Ratlou Local Municipality
Tswaing Local Municipality



SOUTH AFRICA

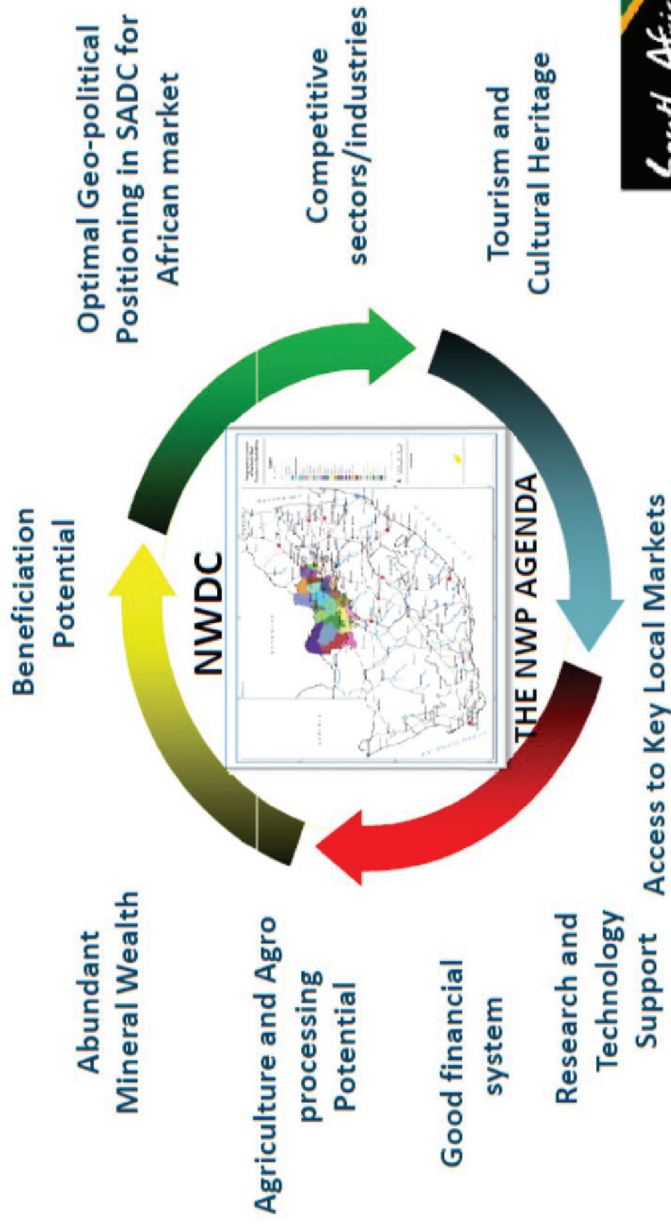


To access the recent and updated economic data report, kindly visit our website
www.nwdc.co.za

Or simply use the URL below to take you to the relevant page
<http://nwdc.co.za/why-the-north-west-province/north-west-economy/>

The NWP Trade and Investment Environment

Positioning the North West Province for Growth and Development



Trade & Investment Facilitation

The North West Development Corporation Trade & Investment Facilitation assist with the following:

- Facilitating joint venture and equity partnerships;
- Providing information on financing options and investment incentives;
- Providing advice on feasibility studies and business plans;
- Assisting investors to obtain work and business permits;
- Providing assistance in obtaining suitable factory space;
- Assisting existing firms to expand and re-invest;
- Assisting companies to find export markets for their products;
- Advisory services to improve company growth and performance;
- Competitiveness improvement support; and
- Facilitating market access to businesses in the province.

LIST OF INVESTMENT OPPORTUNITIES AVAILABLE ON OUR WEBSITE TO EXPLORE

<https://nwdc.co.za/trade-investment/>

- THE BOJANALA SEZ
- PILANESBERG NATIONAL PARK
- LEEMA COMPUTER MANUFACTURING PROJECT
- GOAT VALUE CHAIN BENEFICIATION OPPORTUNITIES
- MOLOPO NATURE RESERVE
- AQUACULTURE PROGRAMME
- TAUNG AGRO PROCESSING HUB
- LINDLEYSPOORT DAM
- PELCHEM SOC LTD
- MOLATEDI DAM
- MOPONOSI CHROME (PTY) LTD
- PERSONAL PROTECTIVE EQUIPMENT (PPE) MANUFACTURING
- ULUSOY AFRICA (PTY) LTD
- MODIMONG NATURE RESERVE
- PROJECT THUTHUKANI
- LENGAU FOODS (PTY) LTD
- ELANDSKRAAL PROJECTS
- DITSOGO PROJECTS (PTY) LTD
- SOUTH GROWN (PTY) LTD
- AMANTLE TRADING & PROJECTS (PTY) LTD

- WITKOP FLUORSPAR MINE (PTY) LTD
- KETLAPHELA PHARMECEUTICALS SOC LTD
- BLACK GRANITE BENEFICIATION
- LETLAMORENG DAM DEVELOPMENT
- MATLOSANA N12 DEVELOPMENT
- GOAT MASSIFICATION
- BEAKE ENGINEERING
- ROOF-ECO MODULAR ROOFING SYSTEMS AFRICA
- GREEN-BUDS LOGISTICS (PTY) LTD
- SBM PROJECTS
- GRANITE BENEFICIATION PROJECT
- RATANS AGROS
- SMART CITY DEVELOPMENT

Bojanala Special Economic Zone

Transforming the Bojanala region into a sustainable beneficiation hub for mineral processing (PGM), capital equipment, renewable energy components and agro-processing.

Why Bojanala SEZ?

Access to Infrastructure

- 88 factories available, 7,2% of total land for SEZ;
- Water volumes available: Vaalkop Dam – 20km from site(160mm pipeline);
- Sewer: 200mm to the existing WWTW;
- Electricity supply: 11MVA current- new substation at Ledig under construction.

Access to Transport Logistics Infrastructure

- Rail (1km from site with unutilised sidings)- Transnet Freight Rail part of PSC;
- Air (Pilanesberg Airport= 19km);
- Road (along R510 connecting to N4).

Access to Markets

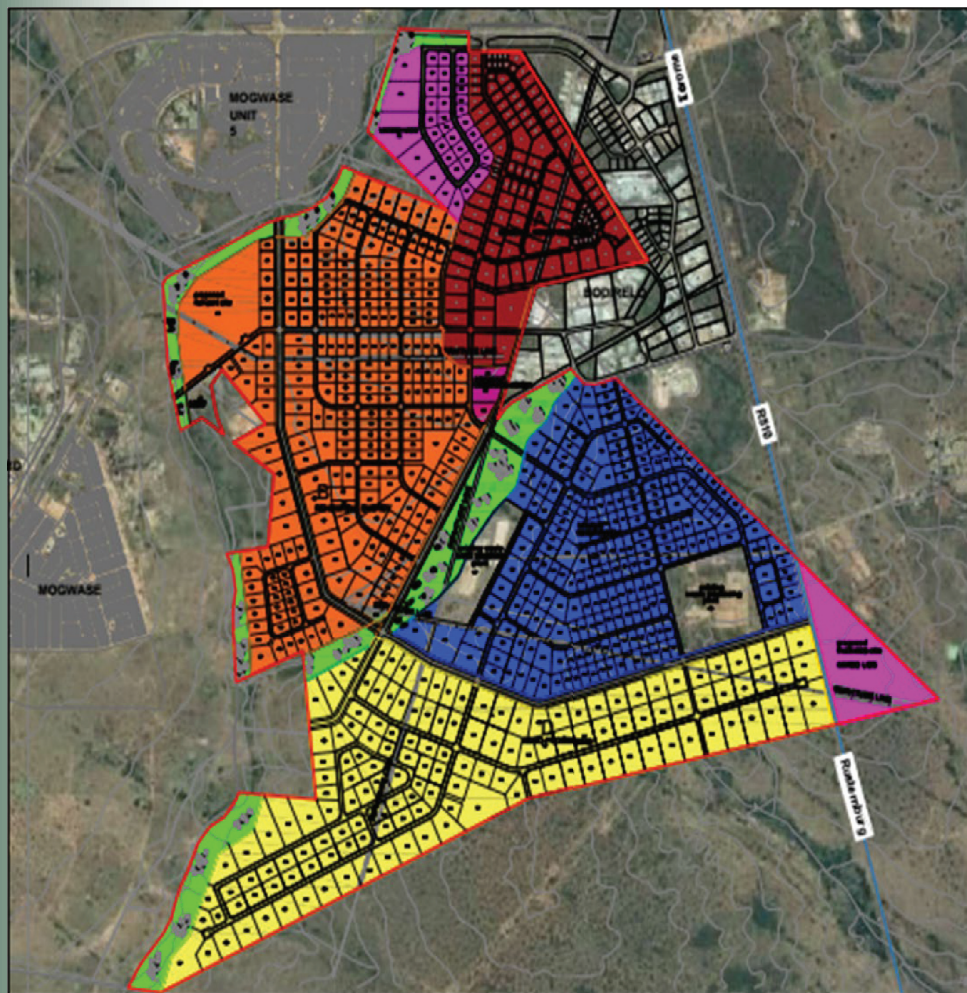
- Platinum group metals is the major product of the mining sector in the North West as the province contributed 40% of world's platinum and 55% of the platinum in the South Africa in 2017.
- The North West province also produces 70% of the dimension stone and granite, 32% of chrome and 20.7% of gold of South Africa. Other minerals produced in the province include diamonds, vanadium, slate, limestone, nickel, silica, manganese, phosphate, fluorspar and zinc.

Proposed Bojanala SEZ - Geographic Location

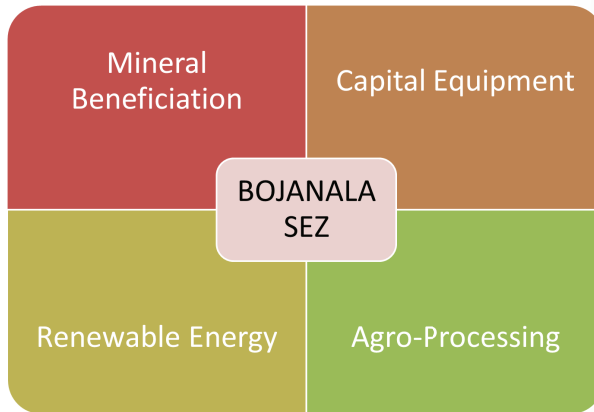
Located at Bodirelo Industrial Park in Mogwase.

Mogwase is in Moses Kotane LM-Bojanala District.

50Km from Rustenburg along R510 road.



Sectoral Focus



SEZ Incentives and Benefits for Investors

- Corporate Tax of 15%;
- Accelerated allowance on buildings and improvement to buildings;
- Salaried employees (below R6000) to receive wage allowance;
- Capital allowance – plant and machinery imports;
- Special customs and VAT incentives;
- Retain status for 10 years;
- Sunset clause until 2024.

Small Business Development

NWDC specialises in offering Bridging Finance and Business Counselling Services.

Bridging Finance Loan Funding

NWDC offers Bridging Finance Loan Funding to SMMEs who have secured an order, contract or tender with a government department, municipality or the private sector. These are referred to as contracting parties.

What is Bridging Finance Loan Funding?

Bridging Finance Loan Funding is a repayable loan granted to an SMME that has been awarded a purchase order, contract or tender, enabling the SMME to fulfil that contract.

Conditions of NWDC providing Bridging Finance Loan Funding:

- Contracting party to agree to sign a cession agreement with the NWDC
- The cession agreement ensures the loan is repaid to the NWDC
- SMMEs who have secured sub-contracting services also qualify to apply for bridging finance loan funding, provided the primary contractor is included in the cession agreement

Documents required:

- Submit NWDC Bridging Finance loan funding application form (link to download form to be supplied here)
- Accompanied by supporting documents:
 - o Proof of contract or purchase order or tender, i.e. appointment letter
 - o Company registration document of the SMME (CIPC)
 - o Copies of identity documents of directors listed on company registration
 - o CSD Certificate
 - o Proof of tax clearance
 - o Relevant industry-related compliance certificates
 - o Proof of residence
 - o For construction contracts: bill of quantities of the tender

For more information or to apply for NWDC's Bridging Finance contact:
Welane Wanzi, SMME Manager – welanew@nwdc.co.za
Nokuthula Phamodi, Executive Manager: SBD – nokuthulap@nwdc.co.za

Business Counselling Services offered by NWDC:

- Holistic small business advice
- Business plan guidance
- Referrals to other support units or institutions
- Assistance with CIPC-related matters through a service level agreement between NWDC and the CIPC

Contact NWDC's Small Business Development unit for an appointment on 018 381 3663

Useful links to our partners:

- Companies and Intellectual Property Commission (CIPC)
 - o Home page - www.cipc.co.za
 - o CIPC e-services portal - <https://eservices.cipc.co.za/>
- Small Enterprise Development Agency (SEDA) - www.seda.org.za
- Small Enterprise Finance Agency (SEFA) - www.sefa.org.za
- National Youth Development Agency NYDA - www.nyda.gov.za
- National Empowerment Fund (NEF) - www.nefcorp.co.za

PROPERTY DEVELOPMENT

NWDC owns an extensive property portfolio in the North West Province and certain areas in the Northern Cape, Mpumalanga and Gauteng.

NWDC's portfolio of rental properties includes factories, light industrial parks, commercial office space, retail shopping centres and residential property.

Our property offering consists of sites and factories of various sizes, to suit the needs of any business looking for factory, manufacturing, storage, office or retail space.

You can view our list of properties that are ready for letting on our website www.nwdc.co.za or simply go to the link below:

<https://nwdc.co.za/property-portfolio/vacant-properties-to-rent/>

NWDC Branches

Ngaka Modiri Molema District

Mahikeng Head Office

P.O. Box 3011, **Mmabatho**, 2735
Tel: 018 381 3663 | Fax: 086 503 4391
22 James Watt Crescent,
Industrial Site, **Mahikeng**
S25.83928 E25.629612

Mmabatho

P.O. Box 3011, **Mmabatho**, 2735
Tel: (018) 381 3663 | Fax: 086 503 4391
30 James Watt Crescent,
Industrial Site, **Mahikeng**
S25.83928 E25.629612

Lehurutshe

P.O. Box 18, **Lerato**, 2880
Tel: (018) 363 3325 | Fax: 086 509 4462

Lehurutshe Shopping Complex

Pres Lucas Mangope Road
S25.493546 E25.984849

Dr. Ruth Mompoti District

Ganyesa

P.O. Box 447, **Ganyesa**, 8613
Tel: (053) 998 3333 | Fax: 086 503 4382
Small Industries, Stand 99016
Tosca Vryburg Road
Ganyesa, 8613S26.593833 E24.17277

Mothibistad

P.O. Box 104, **Mothibistad**, 8487
Tel: (053) 773 1052 | Fax: 086 530 7737
Mothibistadt Shopping Complex
S27.400247 E23.48233

Taung

P.O. Box 674, **Taung Station**, 8580
Tel: 053 994 1709 | Fax: (053) 994 1870
Taung Small Industries
S27.56601 E24.743995

Bojanala District

Rustenburg

Virtual Office while developing a hub
Tel: (014) 594 2570
P.O. Box 6352
Rustenburg 0300

Mogwase

P.O. Box 1490, **Mogwase**, 0314
Tel: (014) 555 7890 | Fax: (014) 555 7894
Mogwase Shopping Complex
Kudu Road
S25.272316 E27.238348

Garankuwa

P.O. Box 2565, **Rosslyn**, 0200
Tel: (012) 703 3371 | Fax: 086 230 2685
Lucas Mangope Drive
S25.56694 E27.994771

Babelegi

P.O. Box 137, **Themba**, 0407
Tel: (012) 719 8670 | Fax: (012) 719 8151
1st Street, Stand 14, **Babelegi**
S25.369663 E28.276446

Dr Kenneth Kaunda District

Klerksdorp

P.O. Box 438, **KLERKS DORP**, 2570
Cell: 076 173 1573 | Fax: 086 559 7679
Westend Building
51 Leask Street
S26.868197 E26.667007



**NORTH WEST
DEVELOPMENT
CORPORATION**

WWW.NWDC.CO.ZA



North West Development Corporation



@Invest_NWDC



North West Development Corporation



www.nwdc.co.za

Mafikeng Head Office

22 James Watt Crescent
Industrial Site

Mafikeng

Tel: 018 381 3663

Fax: 086 503 4391



Join our e-newsletter subscribers & stay informed with latest news and opportunities. Just scan the QR with your smart phone to subscribe.

Mafikeng Head Office

22 James Watt Crescent
Industrial Site
Mafikeng

Tel: 018 381 3663
Fax: 086 503 4391



**NORTH WEST
DEVELOPMENT
CORPORATION**

WWW.NWDC.CO.ZA